

Climate Action in Libraries

Michigan Library Association Conference
October 19, 2023

Presented by: Jen Ferriss and Lisa Kropp
Advisory Board Members of the SLI



**Sustainable
Libraries
Initiative**



Triple Bottom Line Definition:

- Environmentally Sound
- Socially Equitable
- Economically Feasible

Sustainable Libraries

- ✓ **Strong & Authentic Institutions**
- ✓ Catalyst for **Social Cohesion** in Communities
- ✓ Working on **Climate Mitigation** (reducing Greenhouse Gas Emissions (GhG))
- ✓ Active Participants in **Climate Adaptation** (strengthening community resilience)



Hope for Humanity

Libraries can lead the way





A map of Vermont libraries that were damaged in the July 2023 storms and flooding.

2,501 views

Published on August 4

SHARE



Damaged Libraries



All items



Damaged - Electrical Surge



All items



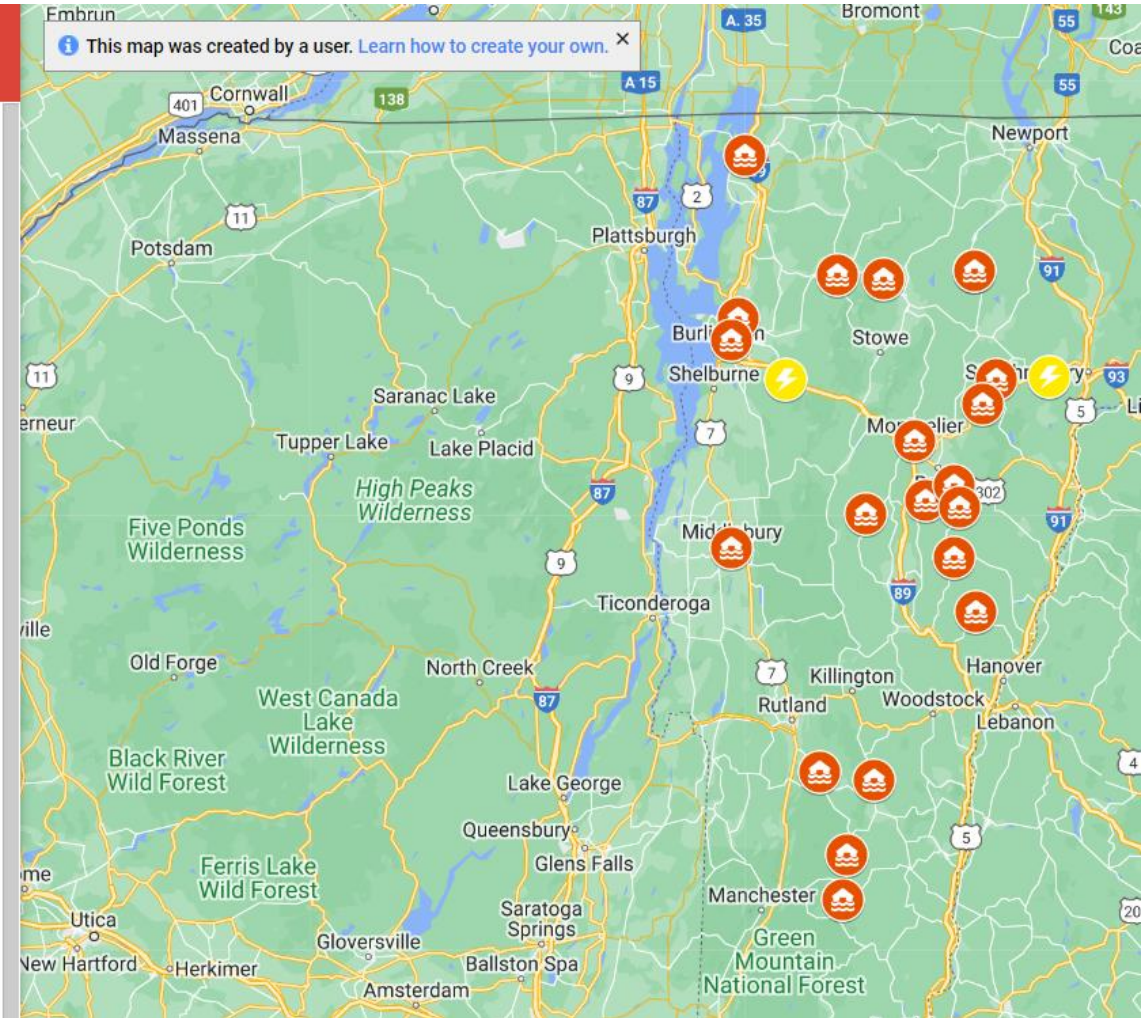
Undamaged Public Libraries



Undamaged School/Academic Libraries



Unreported Public Libraries





November 3-5, 1927 - Rain. Catastrophic flooding statewide. Library flooded to 5.5 feet on the first floor.

Early Spring 1936 - Ice jam. Flooding in downtown Montpelier. Unknown if the Library flooded.

Early March, 1992 - Ice jam. Catastrophic flooding in downtown Montpelier. Library basement flooded to 6 feet.

August 26-27, 2011 - Hurricane Irene. Catastrophic flooding in parts of the state. Library did not flood.

July 9-11, 2023 - Rain. Catastrophic flooding in parts of the state. Library basement flooded to 7.5 feet



BETHANY CHURCH

UNITED CHURCH OF CHRIST

The Rev. Amy Patton, Minister
WORSHIP
Sunday 10am
ALL ARE WELCOME

KELLOGG-HUBBARD
LIBRARY

Established 1894

TAPROOM

2

BASEMENT
BOOK SALE





Next steps

Building Resilience in the Library

- Moving essential systems above the flood line
- Using impermeable materials in the basement rebuild
- Moveable stacks
- Updating flood procedures & building our knowledgebase

Building a Resilient Downtown Montpelier

- Ongoing conversations
- New code requirements; potential for homes to be bought out
- Businesses rebuilding as quickly as possible to open their doors.

Climate Action Now

Identify Vulnerability

- Drought/Heat Wave
- Flooding
- Hail
- Hurricane
- Tornado Outbreak
- Severe Weather
- Wildfire
- Winter Storm/Cold Wave

National Centers for Environmental Information, NOAA

Decarbonize the Library

climate mitigation

Decarbonize Library Infrastructure
by **reducing greenhouse gas**

emissions:

- Energy Efficiency
- Switch to Renewable Energy
- Electric Vehicles
- Ethical Carbon Offsets

Climate Justice

climate adaptation

“Strengthen community resilience and livability:

- Advance Food Justice;
- Advocate for Transportation Equity;
- Uphold Civil and Human Rights in Emergency Management; and
- Facilitate Participatory Democracy.”

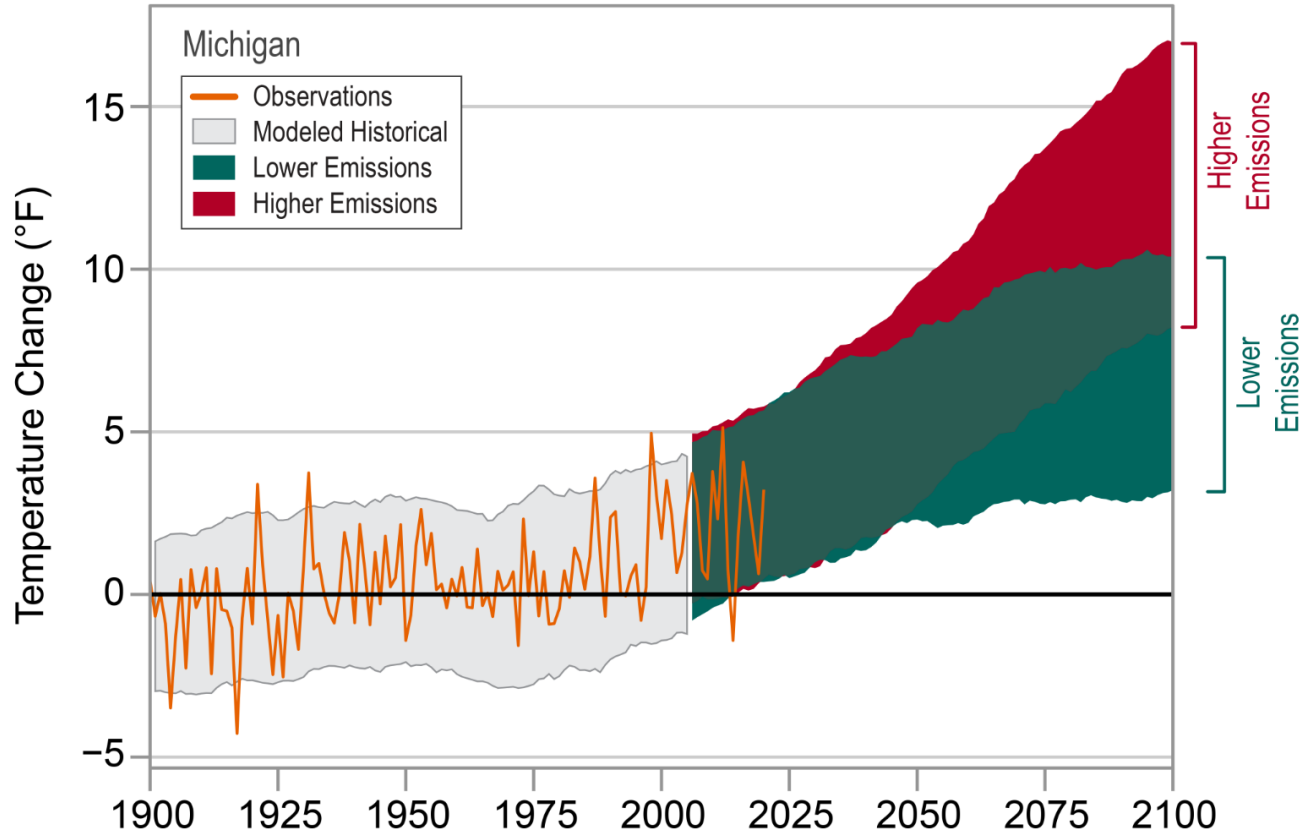
NAACP



“Climate Action Now,” Rebekkah Smith Aldrich, Library Journal, 12.14.2021

Type of Climate Change	How Would It Affect Me?	How Would It Affect My Library?
More Rainstorms		
Less Rainfall		
Higher Daytime Temperatures		
Lower Daytime Temperatures		
More Snowstorms		
Less Snowfall		
Higher Wind speeds		
Poor Air Quality		

Observed and Projected Temperature Change



Temperatures in Michigan have risen almost 3°F since the beginning of the 20th century.

<https://statesummaries.ncics.org/chapter/mi/>

Estimated % of adults who think global warming is happening

Michigan



United States



Schools should teach about global warming



Citizens should do more to address global warming



Public Opinion Estimates, Michigan, 2021

BELIEFS

Global warming is happening



Global warming is caused mostly by human activities



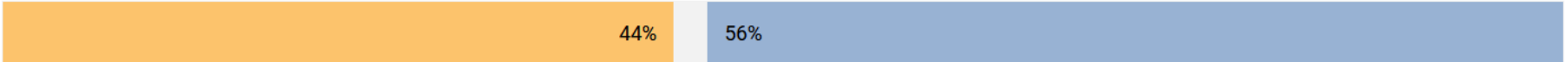
Most scientists think global warming is happening



Global warming is affecting the weather



Has personally experienced the effects of global warming



RISK PERCEPTIONS

Worried about global warming



Global warming will harm plants and animals



Global warming will harm future generations

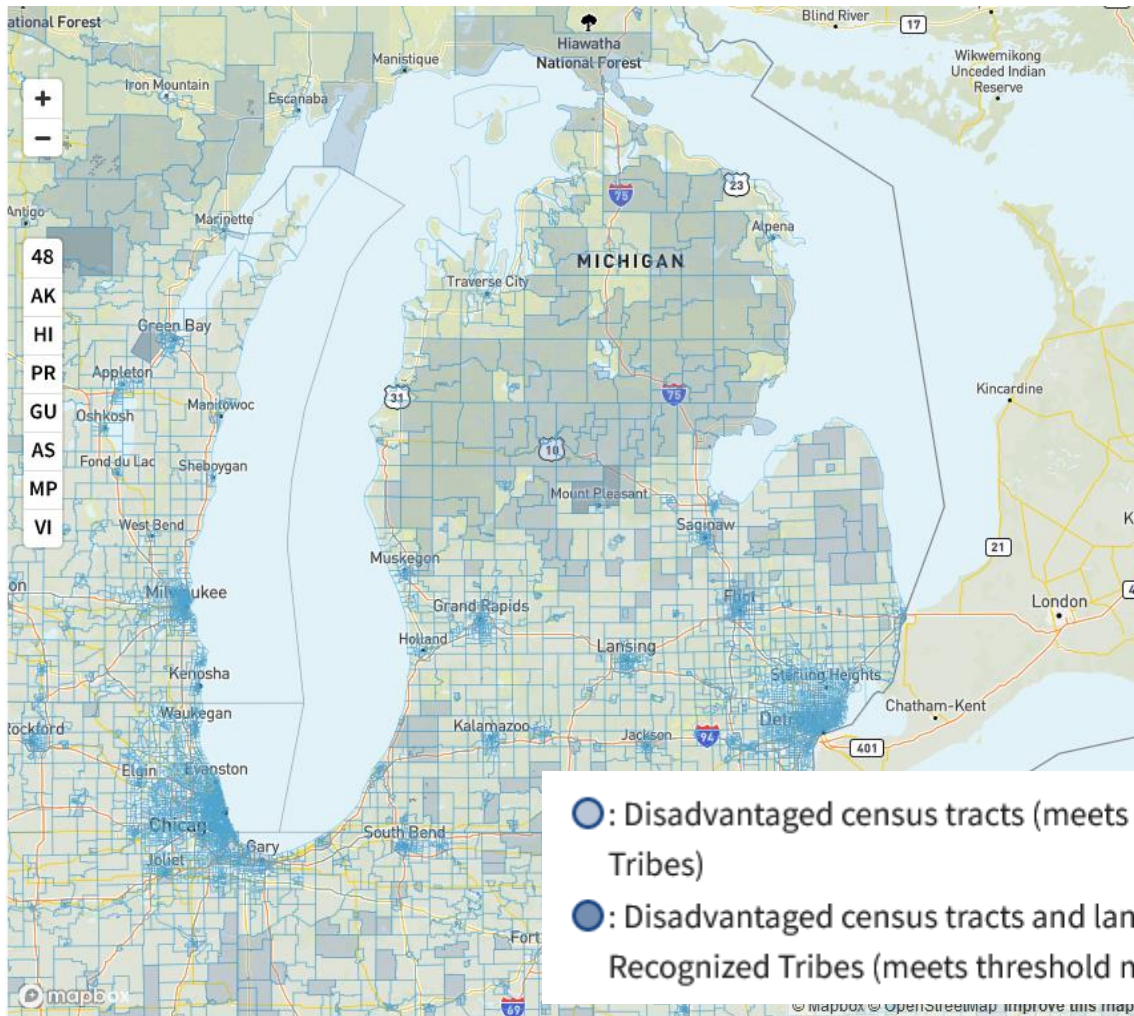


Global warming will harm people in developing countries



Global warming will harm people in the US





Zoom in + , search 🔍 , or locate yourself 📍 and select to see information about any census tract.

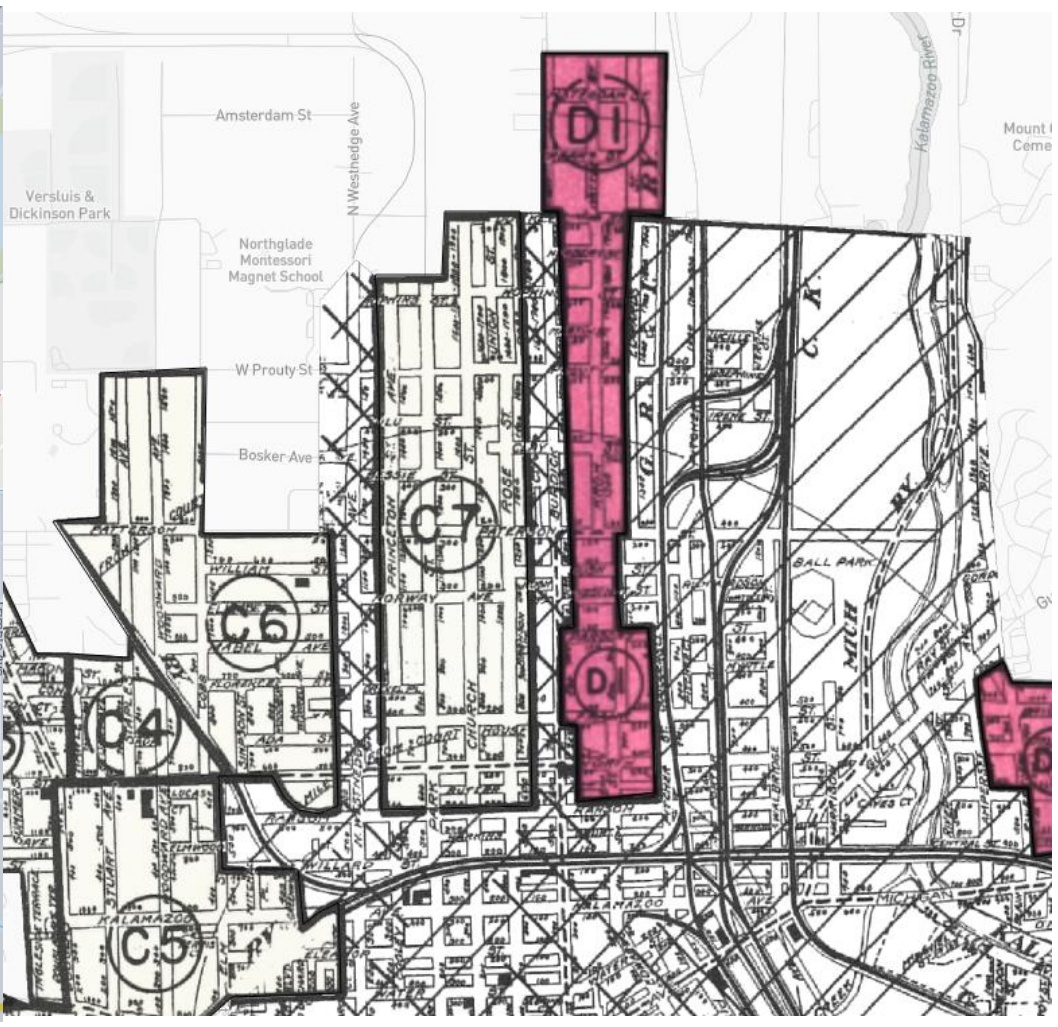
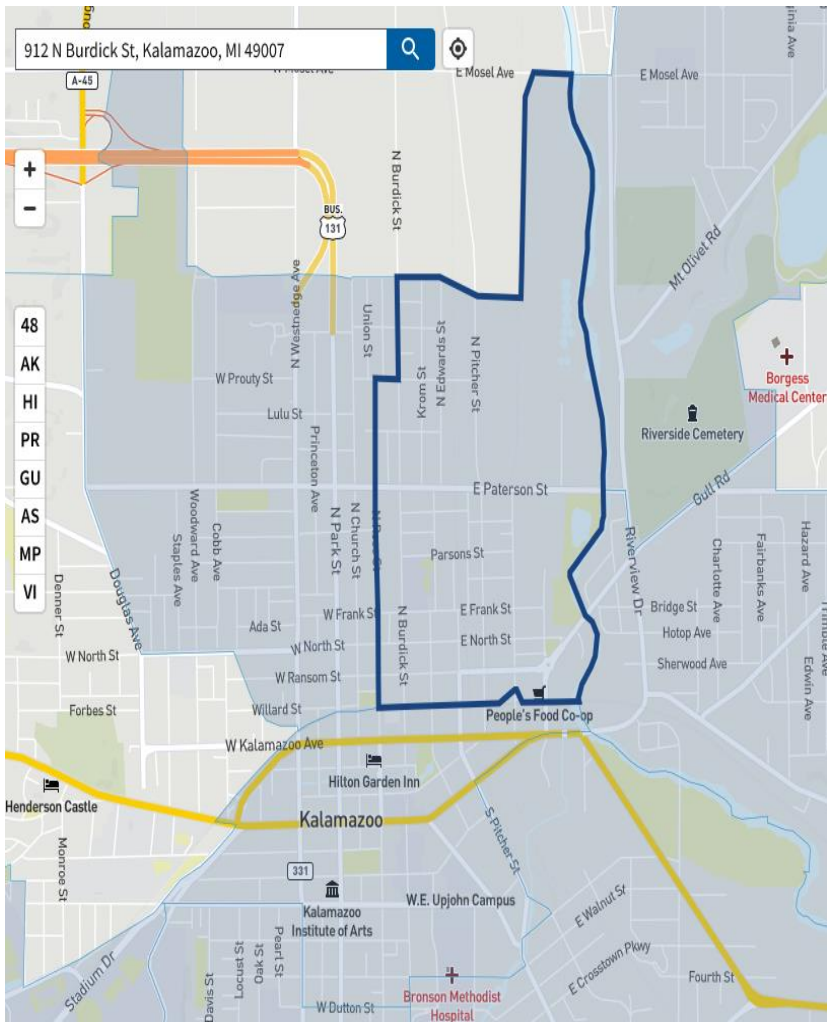
Things to know:

The tool uses census tracts 🗺️ . Census tracts are a small unit of geography. They generally have populations 👥 of between 1,200 - 8,000 people.

Communities that are disadvantaged live in tracts that experience burdens. These tracts are highlighted 🟡 on the map.

The tool ranks most of the burdens using percentiles 📊 . Percentiles show how much burden each tract experiences when compared to other tracts.

- 🟡 : Disadvantaged census tracts (meets threshold methodology OR contains lands of Tribes)
- 🟠 : Disadvantaged census tracts and land within the boundaries of Federally Recognized Tribes (meets threshold methodology AND contains lands of Tribes)



Climate Action Now

Identify Vulnerability

- Drought/Heat Wave
- Flooding
- Hail
- Hurricane
- Tornado Outbreak
- Severe Weather
- Wildfire
- Winter Storm/Cold Wave

National Centers for Environmental Information, NOAA

Decarbonize the Library

climate mitigation

Decarbonize Library Infrastructure
by **reducing greenhouse gas**

emissions:

- Energy Efficiency
- Switch to Renewable Energy
- Electric Vehicles
- Ethical Carbon Offsets

Climate Justice

climate adaptation

“Strengthen community resilience and livability:

- Advance Food Justice;
- Advocate for Transportation Equity;
- Uphold Civil and Human Rights in Emergency Management; and
- Facilitate Participatory Democracy.”

NAACP



“Climate Action Now,” Rebekkah Smith Aldrich, Library Journal, 12.14.2021

Libraries

as Sustainability Leaders



**Sustainable
Libraries
Initiative**

Going Green

Environmental Stewardship and Sustainability

Kalamazoo Public Library strives to be a good steward of our community and our environment. Going Green isn't new at KPL. Over the years, we have examined ways that we can nurture nature by being more conscientious in the way we dispose of our unused materials and invest in building upgrades that are more energy efficient. We know that taking care of our planet is a lifelong obligation, and our efforts will continue to grow as new technology and innovation provide more opportunities to reduce, reuse and recycle.

In November 1992, the Kalamazoo Public Library Board of Trustees adopted a policy of [Environmental Stewardship and Sustainability](#). The policy affirmed the library's ongoing commitment to limit the environmental impact of its operations, and made clear its resolve to become a leader in modeling ecologically sustainable practices.

More than a quarter century later, the library remains committed to reducing its impact on the environment and is dedicated to serving our community as stewards of its precious resources.

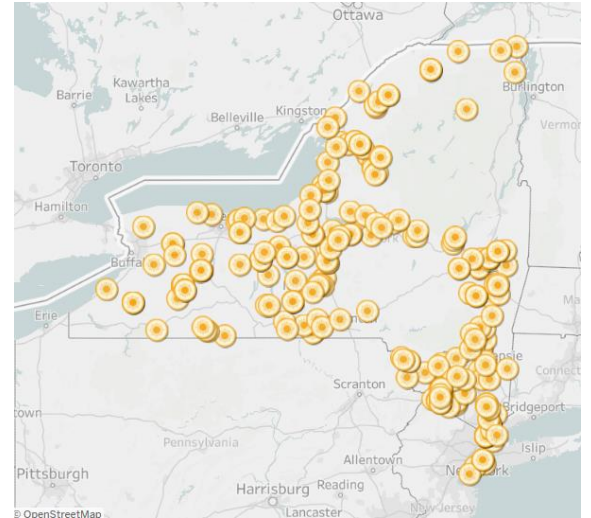




WHAT IS COMMUNITY SOLAR?



Graphic courtesy of Groundswell.org





Lindenhurst Memorial Library

April 22 · 🌐

...

The Board of Trustees, as part of its commitment to sustainable practices, is proud to enter into a pilot program with Suffolk County to share our EV chargers as part of a county wide charging network.

As part of the larger infrastructure work being done on the building, which includes a 73KW solar panel array on the roof, and solar parking lot lights, the EV chargers allow the public to stop at a public library to charge their car while also using library services and programs. Shared services is the backbone of public library service, and the Lindenhurst Memorial Library is excited to be at the forefront of this new initiative.





COMMUNITIES RESPONDING TO EXTREME WEATHER

CLIMATE RESILIENCE HUBS

Learn more about how your organization can become a Climate Resilience Hub!



https://www.climatecrew.org/resilience_hubs





Canton Public Library

August 24 at 8:02 AM · 🌐

Due to widespread flooding in the area south of Cherry Hill, including the library grounds, the library will be closed today, Thursday, August 24. All online services are still available. Follow our social media for updates. Please be safe!



...

Storms, multiple confirmed tornadoes across Michigan leave communities reeling

Darcie Moran, Nushrat Rahman, Chanel Stitt and JC Reindl Detroit Free Press

Published 2:30 p.m. ET Aug. 25, 2023 | Updated 12:48 p.m. ET Sept. 3, 2023

A busy library

Vehicles packed Canton Public Library's parking lot Friday as people, many without power at home, streamed into the building in search of Wi-Fi and a spot to work.

Library staff said they were about three times as busy as a normal Friday. Extra tables and chairs were brought out to accommodate the crowd.

Library employee Laurie Golden, who lives in Plymouth, came in to work despite her own home suffering damage from the overnight storms. She recalled how, as her family hunkered down in their basement while tornado sirens blared, she heard a giant boom, and later discovered that a tree in her neighbor's yard had fallen over her dining room and garage.

One library visitor, Tracy Neil, 60, was among those without power at home. Water from the storms had come up onto his street and was creeping up his driveway.

"I've never seen flooding like this here," Neil said.

We are open today and have power. Stop on by to rest in air conditioning, charge your device, or use our Wi-Fi. Please stay safe on the roads!

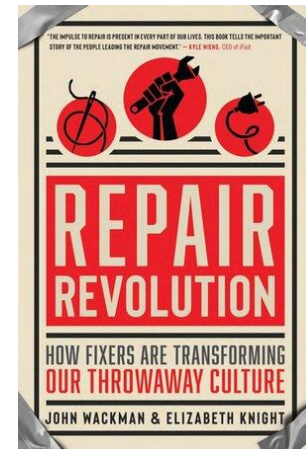
COLUMBIA COUNTY

20 22

CLIMATE CARNIVAL

SATURDAY, JULY 16TH
COLUMBIA COUNTY FAIRGROUNDS
10:00 AM - 4:00PM | FREE ADMISSION

CLIMATECARNIVAL.ORG
CELEBRATE. EDUCATE. MOTIVATE.





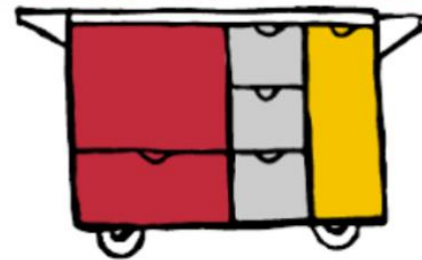
<https://www.libraryoflocal.org/>

- Tool Lending
- Seed Library
- Special Collections
 - Food Security (Y1)
 - Climate Solutions (Y2)
- Programming
- Alignment with NYS Climate Smart Communities





CHARLIE CART PROJECT



Vermont Harvest
of the Month





Sustainable Libraries Initiative

<https://sustainablelibrariesinitiative.org>



Free

- Newsletter
- Mobile App
- Resources
- Live Webinars

Become a Member

- Curated resources
- Access to On Demand Training
- Vendor List

Sustainable Library Certification Program

- Online Dashboard
- Step-By-Step Action Items
- Example policies, program ideas, and more
- Guidance from mentors
- Meetups and Networking Opportunities



Jen Ferriss

jferriss@sals.edu

<https://www.sspl.org/>



Questions?



Lisa Kropp

lkropp@lindenhurstlibrary.org

<https://lindenhurstlibrary.org>



**Sustainable
Libraries
Initiative**

Resources

Sustainable Libraries Initiative: <https://sustainablelibrariesinitiative.org/>

Vermont Flood Map: <https://libraries.vermont.gov/2023Flood> (*last updated 8/29/23, It*)

Climate Action Now: <https://www.libraryjournal.com/story/Climate-Action-Now-Sustainability>

NOAA National Centers for Environmental Information State Climate Summaries (Michigan)
<https://statesummaries.ncics.org/chapter/mi/>

Yale Program on Climate Change Communication <https://climatecommunication.yale.edu/>

The Climate and Economic Justice Screening Tool (CEJST)
<https://screeningtool.geoplatform.gov/en/#3/33.47/-97.5>

Mapping Inequality: Redlining in New Deal America
<https://dsl.richmond.edu/panorama/redlining/#loc=15/42.303/-85.605&mapview=graded&city=kalamazoo-mi&area=D1>

Every Job is a Climate Job by Jamie Alexander (video)
https://www.ted.com/talks/jamie_alexander_no_matter_where_we_work_every_job_is_a_climate_job_now?utm_campaign=tedsread&utm_medium=referral&utm_source=tedcomshare