

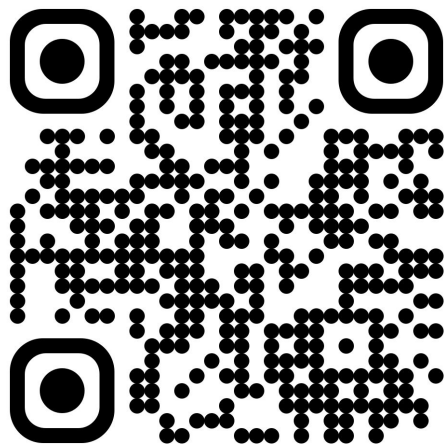
Connecting the Dots

Building Lasting Relationships with Teens
through Outreach and Adaptable Programming

Welcome! Please check
out this quick survey
here:

crowd.live/29CTP

OR SCAN
HERE



Who We Are

Colleen - Clinton-Macomb Public Library

Erin - Warren Public Library

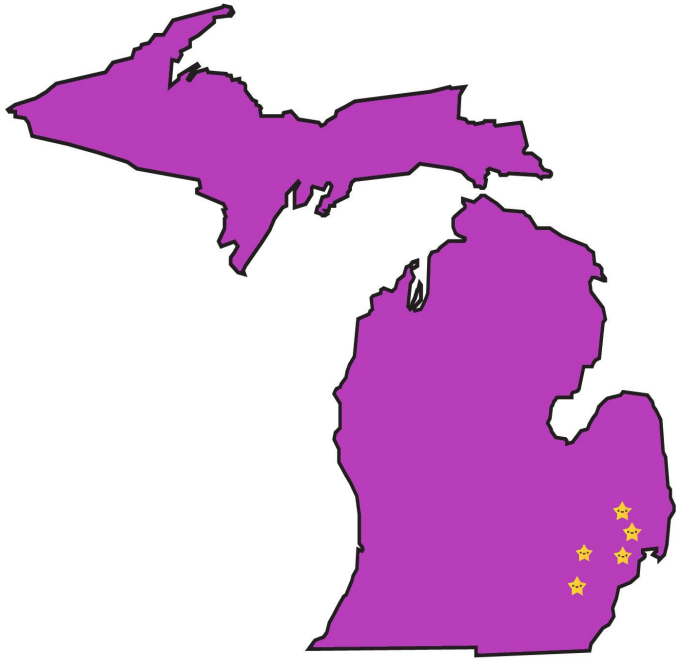
Jennifer - Milan Public Library

Jocelyn - Lyon Township Public Library

Julianne - Warren Civic Center Library

Therese - Romeo District Library

Our Communities



Why Are We Talking About This?

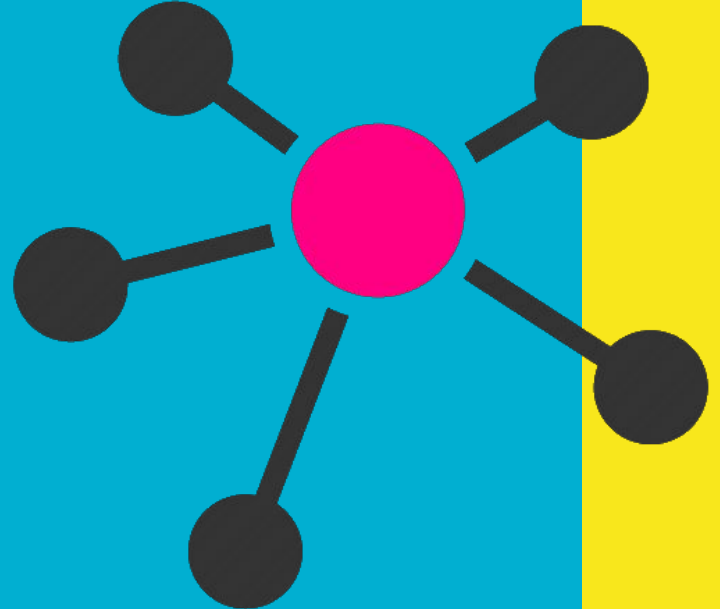
Diversity of Teens

- 1980: 74% of youth identified as non-hispanic white (U.S. Census). 26% all other ethnic groups
- 2020: 47% vs. 53%
- 9.5% ages 13-17 identify as LGBTQIA+ (UCLA study, 2020)
- CDC estimated mental health diagnosis in children aged 3-17 years, 2016-19
 - ADHD 9.8%, Anxiety 9.4%, Behavior problems 8.9%, Depression 4.4%



Building Relationships

Connecting with teens,
and your community



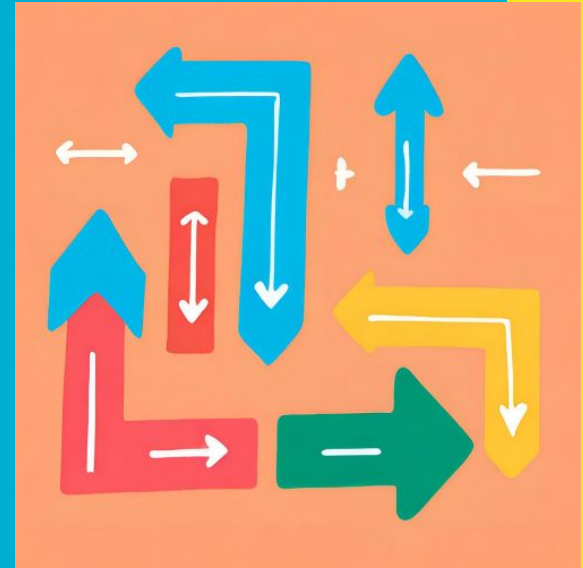
Teen Autonomy

Teen led and focused programming where teen voices are heard



Adaptability (winging it!)

- When successes fail
- Be flexible about defining “success”
- Learning to pivot



Library Connections

Capitalize on
connections with other
libraries, and your
community partners



Getting out there

- “Weird” outreach & lunch visits
- Bookmobile visits & community events
- Collaborative projects in the community



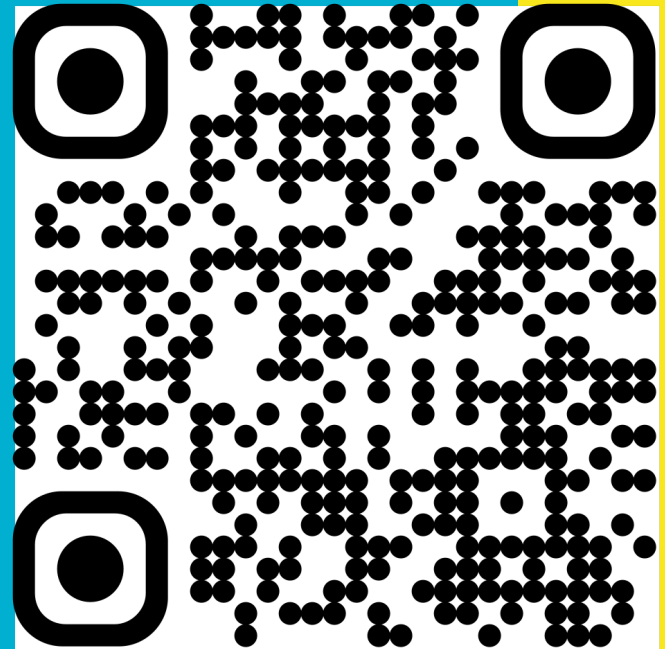
Share/Connect

Have successes or fails to share?

Want to connect with other library staff to collaborate?

Fill out our quick form to get connected!

qr.link/wW519Y



Get in Touch!

Colleen McWhinnie - Clinton-Macomb Public Library - cmcwhinnie@cmpl.org

Erin Delore - Warren Public Library - edelore@cityofwarren.org

Jennifer Perryman - Milan Public Library - jperryman@milanlibrary.org

Jocelyn Levin - Lyon Township Public Library - jlevin@ltpl.org

Julianne Novetsky- Warren Civic Center Library - jnovetsky@cityofwarren.org

Therese Bulszewicz - Romeo District Library - therese@romeodistrictlibrary.org